



The Wildlife Trust BCNP

Brimstone



Brimstone butterflies are known as Gonepteryx, part of the Pieridae family. They live in Europe, as well as Asia and Northern Africa and are known for the bright yellow colour of their wings..



The Wildlife Trust BCNP

Common Blue



Common Blues are a small butterfly from the family Lycaenidae. Males are a lilac blue colour with a thin black border and females are brown with a row of red spots around the edges. Both sexes have a row of red spots along the edge of the hind wings. The caterpillar is small, pale green, with yellow stripes and the chrysalis is olive green and brown and is formed on the ground.



Tony Hisgett

Comma



The Comma butterfly is very common around the UK with a distribution over Europe, Asia, Japan and Morocco. Their wings have a distinctive ragged edge and a white marking on it's under-wing. In the 1920s there were only two sightings of this beautiful butterfly but since then it's number have dramatically increased.

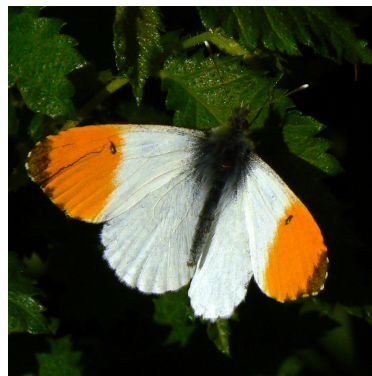


Philip Peacey

Meadow Brown



The Meadow Brown is a butterfly found in European meadows. Males are less colourful, with much reduced orange areas on the upper forewings. Similar butterflies to this are Small Heath and Gatekeeper.

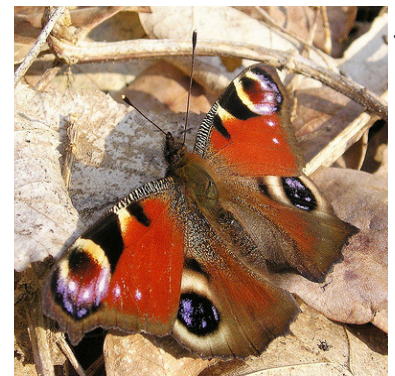


Neil Phillips

Orange Tip



The Orange Tip is a butterfly of the Pieridae family. It has the name because the males have bright orange tips on the forewings, whereas the females are mainly white. Over the past 30 years there has been an increase of orange tip butterflies in the UK, which is believed to be in response to climate change.



Mela Dunnet

Peacock



The European Peacock is a very colourful butterfly found in Europe and some of Asia or as far as Japan. Often wintering in buildings or trees, the Peacock can be seen in spring time. The base colour is a red with black, blue and yellow eye-spots.



Dave Hitchborne

Ringlet



This butterfly is part of the Nymphalidae family, which has about 5,000 species of butterflies. They are medium to large in size and although mainly brown, they do have dainty rings on their wings.



Neil Aldridge

Small Tortoiseshell



Small Tortoiseshell butterflies can be found in Europe and have many bright colours. It's often found in gardens where the caterpillars feed on nettles. It has a dark body with red and yellow wings and blue dots around the rear edge giving it a striking look.



Ingrid Taylor

Large White



The Large White, also known as Cabbage White or Cabbage butterfly is a butterfly in the Pieridae family. They are strong fliers and seen very often in Britain. Their wings are white with black tips on the forewings, which generally get darker in the summer.

Thank you for your help.

We hope you have enjoyed taking a closer look at your garden.

For more information and detailed identification guides, please refer to the Wildlife Trust's GardenWatch website:

www.wildlifebcnp.org/gardenwatch.htm