



Mark Robinson

**Badger**



Badgers are short legged omnivores in the weasel family, Mustelidae. There are eight species of badger, with the 'Meles Meles' found in Ireland and Great Britain. Badgers live underground in burrows, but often move from home to home.



Ben Charles

**Bat**



Bats are flying mammals. The forelimbs of bats are webbed and developed as wings, making them the only mammals that are capable of sustaining flight. Bats do not flap out their entire forewings, instead they flap out their digits which are long and covered with a thin membrane. There are 17 species of bat resident in Britain. They measure from about 29-33mm in length.



Kevin Law

**Fox**



Foxes are medium sized carnivorous mammals belonging to the Canidae family. They're characterised for having a long snout and bushy tail. The most common widespread fox is the Red Fox which has moved in to urban areas with the loss of suitable countryside habitats. Foxes can live up to 10 years.



Tony Hisgett

**Grey Squirrel**



The Grey Squirrel is a tree squirrel, introduced into Britain, where it has spread over the country and displaced the red squirrel. There has been concern recently that this may also happen in Italy and other European countries. The grey squirrel has predominately grey fur but also a slight reddish colour, with a large bushy tail.

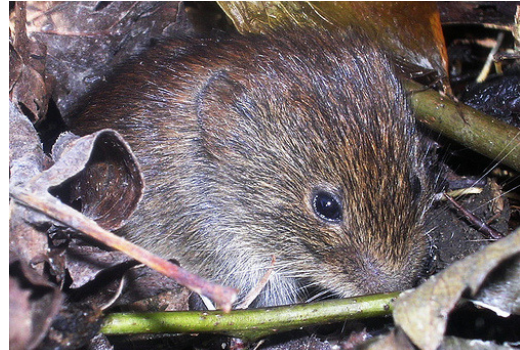


Antoine Berlier

Hedgehog



There are 17 different types of hedgehogs, which have changed little over the last 15 million years. Like many of the first mammals they have adapted a nocturnal way of life. Hedgehogs are easily recognised by their spines, which are hollow hairs made stiff. They are not poisonous and cannot easily be removed, the spines normally only come out when the shed their baby spines to replace them with adult spines.



Edward Simpson

Mouse



Mice are a small mammal belonging to the rodents. They are often known to invade peoples home for food and shelter, as they are eaten by large birds such as hawks. Many different mammals have been known to prey upon mice, however they are known to adapt to any environment, so are very successful on earth today. Mice are primarily nocturnal animals with poor eyesight but good hearing.

Thank you for your help.

We hope you have enjoyed taking a closer look at your garden.

For more information and detailed identification guides, please refer to the Wildlife Trust's GardenWatch website:

[www.wildlifebcnp.org/gardenwatch.htm](http://www.wildlifebcnp.org/gardenwatch.htm)