



Bedfordshire
Cambridgeshire
Northamptonshire

THE NEWSLETTER OF
THE WILDLIFE TRUST
CORPORATE SUPPORTERS

Registered Charity No. 100412

INSIDE THIS ISSUE

New members

Bat safari

Winter event

Year ahead

WILDLIFE AT WORK

ISSUE 21 - Winter 2011

AWARD WINNING GARDENS

The Wildlife Trust's Wildlife Gardening at Work Award Scheme for 2012 is now open for entries. This is your chance to show us what your company has been doing for local wildlife, from bird feeders and bug hotels to wildflowers and window boxes. Not only will your efforts support local wildlife, but your company could receive a Wildlife Gardening at Work Award. Contact us for an information pack and application form. Just getting started with your wildlife garden? You have plenty of time to get your project up and running – entries close in May 2012, and the awards will be presented at our summer event in June.



Photo: Paul Hobson

GET YOUR RUNNING SHOES ON

Help us celebrate our centenary next year by entering the Wildlife Trust 10k Business Challenge. We want local businesses to go head-to-head in the popular Cambourne 10k race, and are looking for teams of four to race against each other to help raise money for local wildlife. The team from the Cambridge Belfry Hotel are already training - as are teams from Alpro Soya and NFU Mutual Cambridge - can you beat their time? The race passes through the Wildlife Trust's scenic Cambourne Nature Reserve in Cambridgeshire on Sunday 15th April 2012. Companies can enter as many teams of four as they wish, with each team being tasked with raising a minimum of £250 to benefit local wildlife. This is a popular race so register with us now - contact Jo Glanville at jo.glanville@wildlifebcn.org or 01954 713560.



OUR FLOCK ARE FULL OF BEANS

Alpro Soya's support of the Wildlife Trust's project at Twywell Hills and Dales, close to their site in Burton Latimer, Northamptonshire, has led to a new entrance sign being unveiled. The new wooden sign includes a map showing visitors to the site a variety of walking routes around this beautiful nature reserve. Alpro Soya's donation is helping to support our flock of rare breed sheep that help keep the conditions at the site perfect for a fantastic array of wildflowers including the common spotted orchid. The new sign is also complimented by an updated leaflet which outlines why the reserve is so important.



WELCOME TO OUR NEW CORPORATE FRIENDS

Fulbourn Hospital: A designated Cambridge University Teaching Trust, Fulbourn Hospital provides services to the 755,000 residents of Cambridgeshire and Peterborough who suffer from mental health problems. With our help, Fulbourn Hospital in Cambridgeshire are hoping to improve their hospital grounds for the benefit of wildlife.

Jardan Cooke: Based in South Bedfordshire, Nigel Cooke says, *“Like most people, we have rather taken the upkeep of the local areas for granted despite using them frequently over the years. We bumped into the appeal for funds for the Totternhoe Quarry project which acted as a bit of a wake-up call, but we have since discovered that the Wildlife Trust is about far more than just keeping the key habitats away from developers. Understanding their long term plans will make our future walks far more interesting as we watch the area evolve and our small contribution has already been paid back by a priceless sense of involvement.”*



Creative Tops: Based in Corby, Creative Tops Ltd are a leading manufacturer of quality kitchen and dining products. They have been working with us to develop an exciting range of Wildlife Trust mugs, which are set to hit the shelves of garden centres, gift shops and other retail outlets in the spring.

Pat Dawson (pictured), Managing Director, commented, *“As a company we are very proud to support our local Wildlife Trust by becoming a corporate member. We are also extremely excited to be able to work with them to produce a fantastic range of mugs which will benefit wildlife across the whole UK.”* Keep an eye out for more information in the spring on where you can purchase your Wildlife Trust mugs!

The Wellcome Trust: The Wellcome Trust’s Genome Campus in Hinxton has an important 15-acre Wetland Nature Reserve, created in 2005 to act as a natural flood attenuation scheme as well as providing a new and diverse natural habitat. The Wildlife Trust have been working with them to provide advice on management and help with involving the local community with the project.

Jayne Proctor, Facilities Manager at the Wellcome Trust says that *“by supporting the Wildlife Trust and continuing our strong partnership we are contributing and safeguarding nature and conservation. We are delighted to be a*

part of such a worthwhile project which will benefit the local community, enhance our local environment and promote our commitment.”

A warm welcome to all our new Standard Corporate Members from everyone at the Wildlife Trust BCN

BAT SAFARI

Following a successful summer of ‘bat safaris’ on the River Cam, Scudamore’s Punting Company has given a donation of £3,649.50 to the Wildlife Trust. This represents 50% of ticket sales from the unique tours, which attracted more than 500 people.

Robin Woolley, Sales and Marketing Manager for Scudamore’s, said, *“We are thrilled to have been working with the Wildlife Trust this year. Not only have we been able to raise awareness and funds for one of Britain’s most misunderstood yet important creatures, the bat, but we have established a partnership with the Wildlife Trust that we believe will be long-lasting and will have a really positive impact on the river-related eco-systems and wildlife in Cambridge.”*

The interactive tours, punted by Scudamore’s staff and led by Wildlife Trust bat experts, took customers on a 75 minute journey along the Grantchester stretch of

the River Cam, which houses a vibrant bat population. The bat expert introduced information on all the varieties of bats likely to be encountered during the tour, followed by a tutorial for customers on the use of electronic bat detectors.

Scudamore’s and the Wildlife Trust plan to run the tours once again next summer. Why not book a bat safari as a staff outing with a difference? For more information contact Scudamore’s on enquiries@scudamores.com or 01223 359750.



Don’t forget to feed the garden birds this winter – buy your food from Vine House Farm and the Wildlife Trust receives 5% of the value of your purchase – www.vinehousefarm.co.uk

NEW YEAR NEW NAME

Eagle-eyed supporters will have noticed that we have a new name – the Wildlife Trust for Bedfordshire, Cambridgeshire and Northamptonshire. At our AGM in October our members voted to shorten our name, though of course Peterborough remains an important centre for our work.

When the Trust was established, it covered three counties and one unitary authority – Peterborough – so all were reflected in the name. Since then, three more authorities have become unitary. Rather than adding these to our name, the Trustees recommended the name be shortened to refer to only the three counties.

Our website can now be found at www.wildlifebcn.org

IMAGES OF SUMMER



Staff from our corporate members have excelled in this summer's Wildlife at Work photography competition. Congratulations to Michael Gittos from TWI Ltd (at MEPC Granta Park) who won with his image Chalkhill Blues and Carline Thistles. He was chosen as the overall winner by a panel of judges from members BGL Group, Cambridge University Press, The Jordans & Ryvita Company and Weetabix. Michael wins a day with Andrew James, editor-in-chief at Peterborough-based *Practical Photography* magazine. The runners up then went forward for the People's Choice award – we are pleased to announce that the winner is Resting Fox by Peter Cariuk, from MedImmune (at MEPC Granta Park).



SPOTTING OTTERS

MEPC Granta Park have run a series of events to support this winter's Cambridgeshire otter survey. Their craft fair and book sale raised an impressive £480, and in November the Wildlife Trust ran a training session on how to spot signs of otters.

Staff were excited to discover that otters are visiting their

stretch of river, which runs through the site near Abington. Volunteers are now drawing up plans to monitor the river at regular dates over the next year.

CHAMBER OF COMMERCE

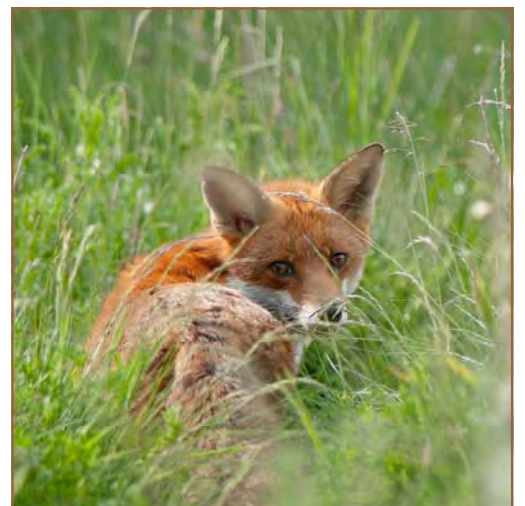
The Wildlife Trust BCN are delighted to have joined the Cambridgeshire Chamber of Commerce. Not only does this provide important benefits to us as a local business but it will also help us to meet other like-minded companies interested in supporting our work. Please let us know if you think one of your suppliers or contacts would be interested in the work of the Wildlife Trust.

WINTER WARMER

Thank you to everyone who came along to our winter corporate event in November. Guests enjoyed an evening of mince pies and networking, with talks about how to make their company grounds more wildlife-friendly. They then had fun making bird feeders out of apples, peanut butter and bird seed.



Special thanks to the Cambridge Belfry Hotel for hosting the event, and to Shirley and Steve from Centrica, and Nicki and Caroline from Cambridge University Press, for inspiring talks about their wildlife gardens.



Will you be doing your Christmas shopping online? Help raise money for the Wildlife Trust BCN as you shop by making www.spendandraise.com/wildlifetrustbcn your first stop. Just click through to your favourite shops, and we receive a commission for each sale. Retailers include Amazon, John Lewis, Marks & Spencer and many more.

Photo: Keith Balmer



HAPPY CHRISTMAS

Wishing all our corporate supporters a Merry Christmas and a Happy New Year. Thank you for all your support over the past twelve months. We look forward to working with you for what will be an exciting year ahead.

2012 is the centenary of what became the Wildlife Trust movement – and it all started here on our patch! Charles Rothschild, a Northamptonshire landowner came up with the idea of nature reserves and purchased Woodwalton Fen which is now the heart of our Great Fen Project in Cambridgeshire.

To celebrate we will be holding lots of events and activities so keep an eye out for your re-vamped membership pack in the new year with full details.

THANK YOU TO ALL OUR CORPORATE SUPPORTERS

EDUCATION PARTNER



GOLD

Aggregate Industries Ltd • Greenwillows Associates Ltd • Hewitsons • Moulton College • National Grid • NFU Mutual Cambridge • UK Power Networks

SILVER

Anglian Water Ltd • Arqiva Ltd • AT Cross Ltd • Cambridge Building Society • Cambridge Steiner School • Scudamore's Punting Company • Taylor Walton LLP • Unilever Research Colworth

BRONZE

Alpro Soya • Amey Infrastructure Ltd • Colpac Ltd • Kier Eastern • Lafarge Aggregates Ltd • MEPC Ltd • ProLogis Developments Ltd

STANDARD

Acorn House Veterinary Surgery • Athene Communications • Automated Systems Group • Barnwell Trailers • Blue Yonder Campervans • British Racing Drivers Club • Cambridge Belfry Hotel • Cambridge Cheese Company • Cambridge Econometrics Ltd • Cambridge Regional College • Cambridge Water Company • Cemex • Centrica (Peterborough Power Station) • Cranfield University • Creative Tops • Fulbourn Hospital • Gardenworks Tree Surgery • Green Witch • Hellidon Lakes Golf & Spa Hotel • Hutchings & Harding • Jordan Cooke • Lockhart Garrett Ltd • Mott MacDonald Ltd • O&H Hampton Ltd • Perkins Group Ltd • Rapid Employment • Richard Buxton Environmental Law • Rotary Club of Kimbolton Castle • Rotary Club of St Neots St Marys • RPS Group • RWE npower (Little Barford Power Station) • Spendlove Contracting • The Jordan's & Ryvita Company Ltd • The Marshall Group of Companies • The Wellcome Trust • Vine House Farm • Weetabix • Whittlebury Park LLP • Wild About Travel

BUSINESS SUPPORTERS

Ark House Veterinary Surgery • Carter Jonas • Emmanuel College • Greens of Soham • Mackays • Trinity College • University of Northampton

CONTACT US



For more information on how your business can support the Wildlife Trust visit www.wildlifebcn.org or contact Caroline Prout at caroline.prout@wildlifebcn.org or call 01954 713549.

To get involved with activities featured in this issue contact Jo Glanville at jo.glanville@wildlifebcn.org or call 01954 713560.



All photos © Wildlife Trust